

First Five Years Fund
www.ffyf.org



INDIANA

FEDERAL AND STATE EARLY CHILDHOOD
EDUCATION INVESTMENT

States across the nation are leading the way to ensure more children—especially those from low-income families—have access to high-quality early learning and care from birth through age five. And much of the progress at the state and local level has been made possible by strong partnerships with the federal government aimed at expanding access, increasing quality, and more. In Indiana (IN), over 55,000 children have access to quality early learning and care through state and federal funding. This abbreviated overview provides a glimpse of the early childhood education opportunities that exist in Indiana, including those made possible with federal funding in fiscal year 2015.

EVERY YEAR:

1

State Pre-K Serves

400+
CHILDREN

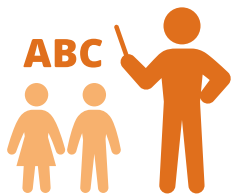
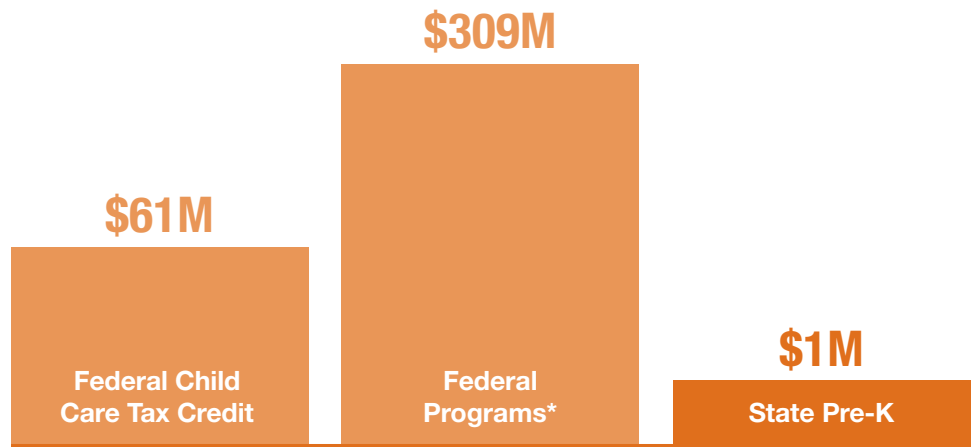
2

Head Start and
Early Head Start Serve

15,000+
CHILDREN

FEDERAL AND STATE EARLY CHILDHOOD EDUCATION PROGRAM FUNDING FY15

*Federal programs include: Head Start, Early Head Start, MIECHV, Early Head Start — Child Care Partnerships, Child Care and Development Fund.



55,000+

Over 55,000 kids benefit from federal and state programs.**

**Federal and state programs include State Pre-K, Head Start and Early Head Start, MIECHV, and the Child Care and Development Fund. MIECHV figures include parents and children served.



5,000+

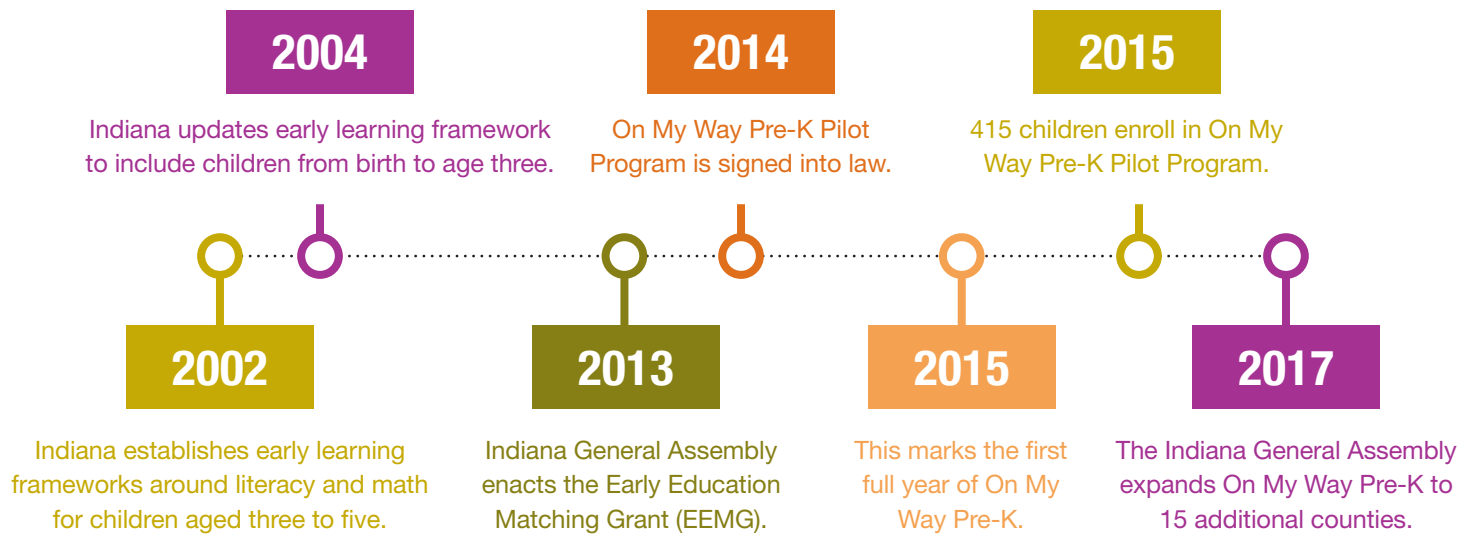
The Federal Maternal, Infant, and Early Childhood Home Visiting (MIECHV) program supports over 5,000 voluntary home visits to new parents.



\$8,900

Center-based care costs approximately \$8,900 per child.

A TIMELINE OF STATE LEADERSHIP: EARLY CHILDHOOD EDUCATION IN INDIANA



“A strategic investment now to expand state-funded prekindergarten for children from low-income families is an essential investment we must make in Indiana’s workforce and our state’s future.”

— INDIANA GOVERNOR ERIC HOLCOMB

INDIANA HEAD START COLLABORATION OFFICE (INHSSCO)

- Early Head Start—Child Care Partnership initiative (EHS—CCP) is a competitive grant opportunity to support Early Head Start grantees that partner with child care providers. Through thoughtful partnerships, providers combine often-fragmented funds and piecemeal services to better meet the needs of low-income children and their families.
- The Partnership provides child care providers in Indiana with \$9.1 million to support high-quality early learning programs across the state.
- EHS—CCP provides funding in Indiana to support comprehensive, continuous developmental services to children in low-income families.
- EHS—CCP grantee, Early Learning Indiana, provides funding, administrative support, classroom coaching, and other technical assistance to partner programs.
- Early Learning Indiana EHS—CCP funding supports high-quality, research-based Head Start programs for 88 children ages one through three.

IN INDIANA, EARLY CHILDHOOD EDUCATION IS SHOWN TO:



Improve Social/
Emotional Development



Grow Literacy/
Numeracy Skills



Increase
Wages



Reduce the Need for
Spending on Special
Education